



Best practices

Design for HP MJF: Design guidelines

Introduction

As with other 3D printing technologies, there is a set of recommendations to follow when designing for HP Multi Jet Fusion technology to ensure parts and features are printed to specification.

Wall thickness

In general, the minimum recommended wall thickness is 0.3 mm for short walls oriented in the XY plane, and 0.5 mm for short walls oriented in the Z direction.

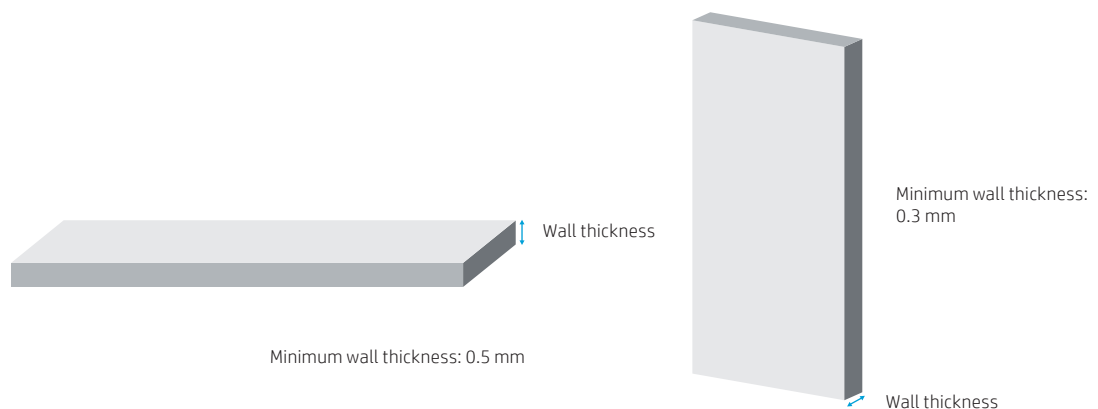


Figure 1. Minimum wall thickness

Cantilevers

When printing a cantilever, the minimum wall thickness depends on the aspect ratio, which is the length divided by the width. For a cantilever with a width of less than 1 mm, the aspect ratio should be less than 1. There are no specific recommendations for widths of 1 mm or larger. For parts with a high aspect ratio, it is recommended to increase the wall thickness or to add ribs or fillets to reinforce the part.

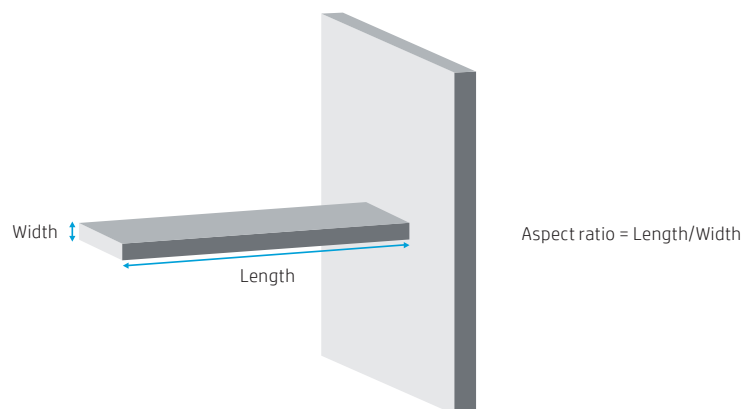


Figure 2. Cantilevers

Connecting parts

Sometimes a pair of printed parts need to fit together to form the final application. To ensure correct assembly, the minimum gap between the interface areas of these parts should be at least 0.4 mm (± 0.2 mm of tolerance for each part).

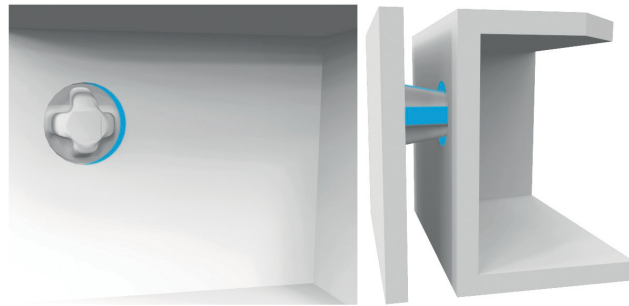


Figure 3. Minimum gap between connecting parts

Moving parts

As a general rule, spacing and clearance between faces of printed as assemblies should be a minimum of 0.7 mm.

Parts with walls with a minimum thickness of 30 mm should have a larger gap between each side to ensure proper performance.

For parts with walls that are thinner than 3 mm, the clearance between parts printed as assemblies can be as low as 0.3 mm, but this fully depends on the design, and iterations with the manufacturer may be necessary to ensure quality performance.

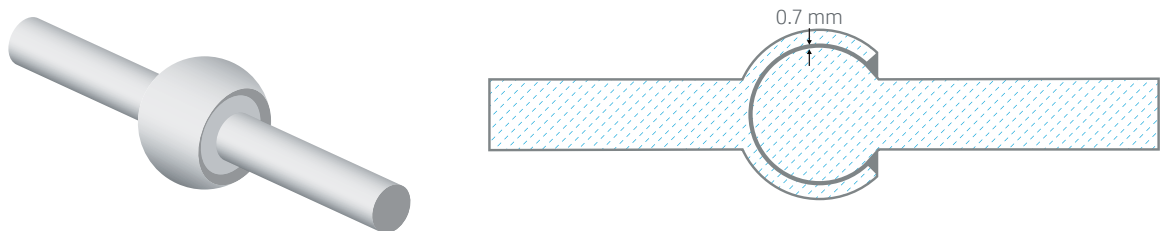


Figure 4. Minimum gap between moving parts

Thin and long parts

Thin and long parts are susceptible to non-uniform cooling, which may cause uneven shrinkage along the printed part, creating a distortion in a certain direction that deviates from the nominal shape.

As a rule of thumb, any part with an aspect ratio—length vs. width—higher than 10:1, or any part with an abrupt change in its cross-section or a predominantly long and thin curved segment is susceptible to exhibiting warpage as shown in the image below:

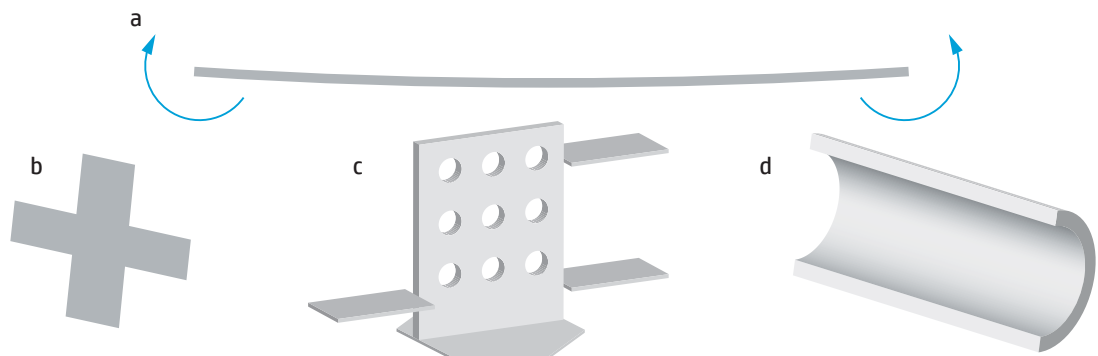


Figure 5. Part categories susceptible to shrinkage-induced warpage (a) include: thin and long parts (b), parts with abrupt changes in cross-sections (c), and thin curved surfaces (d)

To minimize the possibility of this deformation, there are several recommendations to keep in mind when designing the part:

- Increase the thickness of long walls to reduce their aspect ratios.
- Avoid ridges and ribs on large, flat areas.
- Re-design parts with high potential stresses and smoothen their cross-section transitions.
- Lighten the parts by hollowing them or by adding internal lattices.

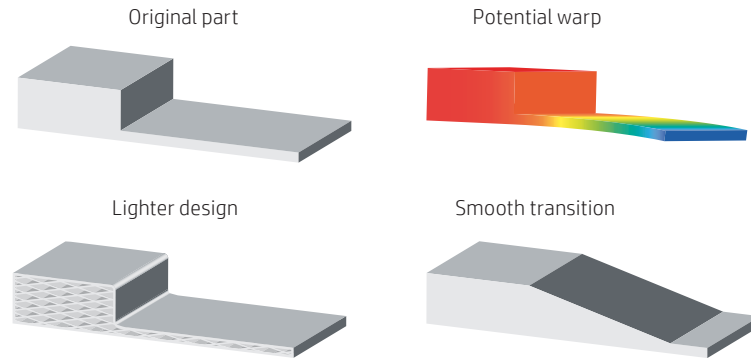


Figure 6. Warpage mitigation strategies

Design optimization strategies: Solid part or structural fill

HP Multi Jet Fusion technology allows for the printing of topology-optimized, generative designs or even small lattice structures. This kind of design allows for the creation of thinner sections, which accumulate and re-radiate less heat, improving the dimensional accuracy and general look and feel of the parts.

It also helps to reduce the weight of the part, the quantity of material, and the fluid agent used compared with fully solid designs, which not only reduces the cost of the part but also helps reduce the operating cost in applications that are very weight-sensitive.

Hollow parts

This design optimization strategy involves hollowing the model through an automatic process. (Professional software such as SolidWorks, Materialise Magics with Materialise Build Processor for HP Multi Jet Fusion technology, and Autodesk® Netfabb® have this built in.)

The minimum recommended wall thickness is 2 mm, but higher mechanical properties are achieved with thicker walls. The optimum choice is dependent upon the application.

Once the model has been printed, drain holes can be implemented in the hollow part to remove the trapped unfused powder. Otherwise, trapped unfused powder can remain within the part, which results in heavier and more resistant parts compared with the fully hollow option. While the part is still light, it is weaker than the non-hollowed version. The difference in weight stems from the different densities of fused and unfused material.

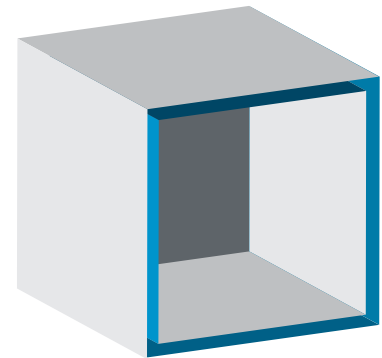


Figure 7. Example of hollow part



Leaving the powder trapped within a part also saves post-processing time since powder extraction is not required.

Lattice structures

This design optimization strategy involves hollowing a part and replacing the internal solid mass with a lattice structure that provides mechanical integrity via the collective action of many rigid cells while still noticeably reducing the part's mass and cost.

This re-design is also a fast process that can be automated with professional software such as Materialise Magics or nTopology.

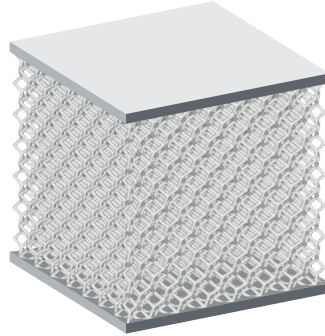


Figure 8. Example of lattice structure

Topology optimization

Topology optimization is a finite element method (FEM)–based process that finds the best distribution of material given an optimization goal and a set of constraints. Typical optimization goals are mass reduction and creating specific mechanical properties. This process requires the designer to know the part's function and load distribution in depth but provides the most optimized method of reducing weight and cost from the original design.



HP part optimized
by Autodesk with Netfabb

Figure 9. Example of topology optimization